

**FKBPL Antibody (C-term)**  
**Affinity Purified Rabbit Polyclonal Antibody (Pab)**  
**Catalog # AP5138b****Specification**

---

**FKBPL Antibody (C-term) - Product Information**

Application	FC, IHC-P, WB,E
Primary Accession	<a href="#">Q9UIM3</a>
Other Accession	<a href="#">Q6MG81</a> , <a href="#">Q35450</a>
Reactivity	Human
Predicted	Mouse, Rat
Host	Rabbit
Clonality	Polyclonal
Isotype	Rabbit IgG
Calculated MW	38176
Antigen Region	264-292

**FKBPL Antibody (C-term) - Additional Information****Gene ID** 63943**Other Names**

FK506-binding protein-like, WAF-1/CIP1 stabilizing protein 39, WISp39, FKBPL, DIR1, NG7

**Target/Specificity**

This FKBPL antibody is generated from rabbits immunized with a KLH conjugated synthetic peptide between 264-292 amino acids from the C-terminal region of human FKBPL.

**Dilution**

FC~~1:10~50

IHC-P~~1:50~100

WB~~1:1000

E~~Use at an assay dependent concentration.

**Format**

Purified polyclonal antibody supplied in PBS with 0.09% (W/V) sodium azide. This antibody is purified through a protein A column, followed by peptide affinity purification.

**Storage**

Maintain refrigerated at 2-8°C for up to 2 weeks. For long term storage store at -20°C in small aliquots to prevent freeze-thaw cycles.

**Precautions**

FKBPL Antibody (C-term) is for research use only and not for use in diagnostic or therapeutic procedures.

**FKBPL Antibody (C-term) - Protein Information**

**Name** FKBPL

**Synonyms** DIR1, NG7

**Function** May be involved in response to X-ray. Regulates p21 protein stability by binding to Hsp90 and p21.

**Tissue Location**

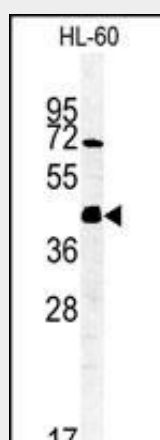
Ubiquitously expressed with higher levels in testis.

**FKBPL Antibody (C-term) - Protocols**

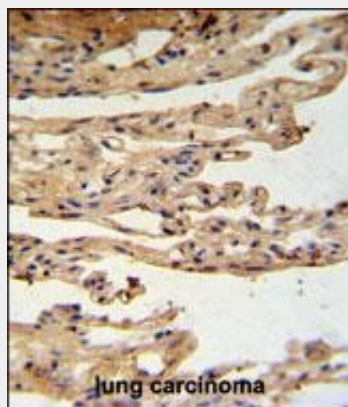
Provided below are standard protocols that you may find useful for product applications.

- [Western Blot](#)
- [Blocking Peptides](#)
- [Dot Blot](#)
- [Immunohistochemistry](#)
- [Immunofluorescence](#)
- [Immunoprecipitation](#)
- [Flow Cytometry](#)
- [Cell Culture](#)

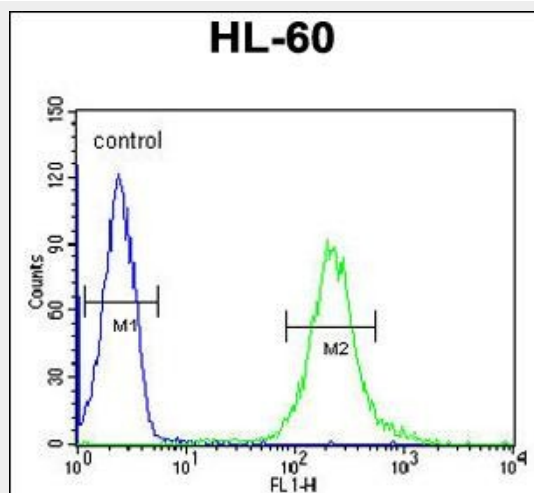
**FKBPL Antibody (C-term) - Images**



Western blot analysis of FKBPL Antibody (C-term) (Cat. #AP5138b) in HL-60 cell line lysates (35ug/lane).FKBPL (arrow) was detected using the purified Pab.



FKBPL Antibody (C-term) (Cat. #AP5138b) IHC analysis in formalin fixed and paraffin embedded lung carcinoma followed by peroxidase conjugation of the secondary antibody and DAB staining. This data demonstrates the use of the FKBPL Antibody (C-term) for immunohistochemistry. Clinical relevance has not been evaluated.



FKBPL Antibody (C-term) (Cat. #AP5138b) flow cytometric analysis of HL-60 cells (right histogram) compared to a negative control cell (left histogram). FITC-conjugated goat-anti-rabbit secondary antibodies were used for the analysis.

#### **FKBPL Antibody (C-term) - Background**

FKBPL has similarity to the immunophilin protein family, which play a role in immunoregulation and basic cellular processes involving protein folding and trafficking. The encoded protein is thought to have a potential role in the induced radioresistance. Also it appears to have some involvement in the control of the cell cycle.

#### **FKBPL Antibody (C-term) - References**

McKeen, H.D., et al. Cancer Res. 70(3):1090-1100(2010)  
Sunnotel, O., et al. Reprod. Biol. Endocrinol. 8, 22 (2010)  
Barcellos, L.F., et al. PLoS Genet. 5 (10), E1000696 (2009)